

الکترونیک
صنعت امن

SANAT AMN ELECTRONIC

@hua
TECHNOLOGY

NETWORK

PRODUCT PRICE LIST

با خرید محصولات صنعت امن
از باشگاه مشتریان صنعت امن
هدیه دریافت نمایید



NETWORK CAMERA

تصویر	مدل	مشخصات	قیمت
	DH-IPC-HFW1020SP	<ul style="list-style-type: none"> 1MP IR Mini-Bullet Network Camera > 1/4" 1Megapixel progressive CMOS > H.264+ & H.264 dual-stream encoding > 25/30fps@720P(1280x720) > DWDR, Day/Night(ICR), 3DNR, AWB, AGC, BLC > Multiple network monitoring: Web viewer, CMS(DSS/PSS) & DMSS > 2.8 mm fixed lens (3.6mm optional) > Max IR LEDs Length 30m > IP67, PoE 	<p>۳,۶۳۰,۰۰۰</p> <p>+ ۱۰٪ ارزش افزوده</p>
	DH-IPC-HFW1230S1P	<ul style="list-style-type: none"> 2MP Entry IR Fixed-Focal Bullet Network Camera > 2MP, 1/2.8" CMOS image sensor, low illuminance, high image definition > Outputs max. 2MP (1920 x 1080) @25/30 fps > H.265 codec, high compression rate, ultra-low bit rate > Built-in efficient IR illuminator, and the max. illumination distance is 30 m > ROI, SMART H.264+/H.265+, flexible coding > Rotation mode, DWDR, 3D NR, HLC, BLC, digital watermarking > Abnormality detection: Motion detection, video tampering, network disconnection, IP conflict, illegal access > 12V DC/PoE power supply > IP67 protection 	<p>۳,۷۵۰,۰۰۰</p> <p>+ ۱۰٪ ارزش افزوده</p>
	DH-IPC-HFW1230S1P-A	<ul style="list-style-type: none"> 2 MP Entry IR Fixed-focal Bullet Network Camera > 2-MP 1/2.8" CMOS image sensor, low luminance, and high definition image. > H.265 codec, high compression rate, ultra-low bit rate > Outputs max. 2 MP (1920 x 1080)@25/30 fps > Abnormality detection: Motion detection, video tampering, network disconnection, IP conflict, audio detection and illegal access > Built-in MIC > Max IR LEDs Length 30m > 12V DC/PoE power support > IP67 	<p>۳,۸۹۰,۰۰۰</p> <p>+ ۱۰٪ ارزش افزوده</p>
	DH-IPC-HFW1230SP	<ul style="list-style-type: none"> 2MP IR Mini-Bullet Network Camera > 1/2.7" 2Megapixel progressive CMOS > H.265& H.264 dual-stream encoding > 25/30fps@1080P(1920x1080) > DWDR, Day/Night(ICR), 3DNR, AWB, AGC, BLC > Multiple network monitoring: Web viewer, CMS(DSS/PSS) & DMSS > 2.8 mm fixed lens (3.6mm optional) > Max IR LEDs Length 30m > IP67, PoE 	<p>۴,۱۶۰,۰۰۰</p> <p>+ ۱۰٪ ارزش افزوده</p>
	DH-IPC-HFW1239S1P-A-LED	<ul style="list-style-type: none"> 2 MP Entry Full-color Fixed-focal Bullet Network Camera > 2-MP 1/2.8" CMOS image sensor, low luminance, and high definition image > H.265 codec, high compression rate, ultra-low bit rate > Outputs max. 2 MP (1920 x 1080)@25/30 fps > Rotation mode, DWDR, 3D NR, HLC, BLC, digital watermarking, applicable to various monitoring scenes > Abnormality detection: Motion detection, video tampering, network disconnection, IP conflict, illegal access > Built-in warm light, and the max. illumination distance is 15 m. > 12V DC/PoE power support > Built-in MIC > IP67 	<p>۵,۳۳۰,۰۰۰</p> <p>+ ۱۰٪ ارزش افزوده</p>
	DH-IPC-HFW1239S1P-A-IL-S6	<ul style="list-style-type: none"> 2MP Entry Smart Dual Light Fixed-focal Bullet Network Camera > 2-MP 1/2.8" CMOS image sensor, low luminance, and high definition image. > Outputs max. 2 MP (1920 x 1080)@25/30 fps. > H.265 codec, high compression rate, ultra-low bit rate. > Built-in multi-corelight, the max.IRdistance is 30m and the max.warmlight distance is30m. > DWDR, 3D NR, HLC, BLC, digital watermarking > ROI, SMART H.264+/H.265+, flexible coding > Abnormality detection: Motion detection, video tampering, audio detection, network disconnection, IP conflict, illegal access. > Built in Mic. > 12 VDC/PoE power supply, easy for installation. > IP67 protection. > Supports human detection. 	<p>۵,۳۳۰,۰۰۰</p> <p>+ ۱۰٪ ارزش افزوده</p>
	DH-IPC-HFW4231EP-SE	<ul style="list-style-type: none"> 2MP WDR IR Mini Bullet Network Camera > 1/2.8" 2Megapixel progressive scan STARVISTM CMOS > H.265&H.264 triple-stream encoding > 50/60fps@1080P(1920x1080) > Smart Detection supported > WDR(120dB), Day/Night(ICR), 3DNR, AWB, AGC, BLC > Multiple network monitoring: Web viewer, CMS(DSS/PSS) & DMSS > Intelligent IVS: Tripwire, Intrusion, Object Abandoned/Missing > Advanced Intelligent Functions: Face Detection > 3.6mm fixed lens (6mm optional) > Max. IR LEDs Length 40m > Micro SD Memory > IP67 Protection, PoE 	<p>۵,۹۴۰,۰۰۰</p> <p>+ ۱۰٪ ارزش افزوده</p>
	DH-IPC-HFW1439S1P-A-LED	<ul style="list-style-type: none"> 4 MP Entry Full-color Fixed-focal Bullet Network Camera > 4-MP 1/3" CMOS image sensor, low luminance, and high definition image > H.265 codec, high compression rate, ultra-low bit rate > Outputs max. 4 MP (2560 x 1440)@25/30 fps > Rotation mode, WDR, 3D NR, HLC, BLC, digital watermarking, applicable to various monitoring scenes > Abnormality detection: Motion detection, video tampering, network disconnection, IP conflict, illegal access > Built-in warm light, and the max. illumination distance is 15 m. > 12V DC/PoE power support > Built-in MIC > IP67 	<p>۶,۴۸۰,۰۰۰</p> <p>+ ۱۰٪ ارزش افزوده</p>

NETWORK CAMERA

تصویر	مدل	مشخصات	قیمت
	DH-IPC-HFW1439S1P-A-IL-S6	<p>4MP Entry Smart Dual Light Fixed-focal Bullet Network Camera</p> <ul style="list-style-type: none"> > 4-MP 1/2.9" CMOS image sensor, low luminance, and high definition image. > Outputs max. 4 MP (2560×1440)@25/30 fps. > H.265 codec, high compression rate, ultra-low bit rate. > Built-in multi-core light, the max. IR distance is 30m and the max. warm light distance is 30 m. > WDR, 3D NR, HLC, BLC, digital watermarking > ROI, SMART H.264+/H.265+, flexible coding > Abnormality detection: Motion detection, video tampering, audio detection, network disconnection, IP conflict, illegal access. > Built in Mic. > 12 VDC/PoE power supply, easy for installation. > IP67 protection. > Supports human detection 	<p>۶,۴۸۰,۰۰۰</p> <p>+ ۱۰٪ ارزش افزوده</p>
	DH-IPC-HFW2441SP-S	<p>4MP IR Fixed-focal Bullet WizSense Network Camera</p> <ul style="list-style-type: none"> > 4-MP 1/2.9" CMOS image sensor, low luminance, and high definition image. > Outputs max. 4 MP (2688×1520)@20 fps, and supports 2560×1440@25/30 fps. > H.265 codec, high compression rate, ultra-low bit rate. > Built-in IR LED, and the max. illumination distance is 30 m. > ROI, SMART H.264+/H.265+, flexible coding > Rotation mode, WDR, 3D NR, HLC, BLC, digital watermarking > Intelligent monitoring: Intrusion, tripwire (the two functions support the classification and accurate detection of vehicle and human) > Supports max. 256 G Micro SD card; built in MIC. > 12 VDC/PoE power supply. > IP67 protection. > SMD Plus. 	<p>۷,۸۵۰,۰۰۰</p> <p>+ ۱۰٪ ارزش افزوده</p>
	DH-IPC-HFW2439SP-SA-LED	<p>4MP Lite Full-color Fixed-focal Bullet Network Camera</p> <ul style="list-style-type: none"> > 4MP, 1/3" CMOS image sensor, low illumination, high image definition > Outputs 4MP (2560×1440) @ 25/30 fps, Max. supports 4MP (2688×1520) @ 20 fps > H.265 codec, high compression rate, ultra-low bit rate > Built-in warm lights, max. illumination distance: 30 m > ROI, SMART H.264+/H.265+, flexible coding > Rotation mode, WDR, 3D NR, HLC, BLC, digital watermarking > Intelligent detection: Intrusion, tripwire > Abnormality detection: Motion detection, video tampering, no SD card, SD card full, SD card error, network disconnection, IP conflict, illegal access, voltage detection > Supports max. 256 GB Micro SD card and built-in Mic > 12V DC/PoE power supply > IP67 protection 	<p>۸,۰۷۰,۰۰۰</p> <p>+ ۱۰٪ ارزش افزوده</p>
	DH-IPC-HFW2449SP-S-LED	<p>4MP Full-color Fixed-focal Bullet Wizsense Network Camera</p> <ul style="list-style-type: none"> > 4-MP 1/2.9" CMOS image sensor, low luminance, and high definition image. > Outputs max. 4 MP (2688×1520)@20 fps, and supports (2560×1440)@25/30 fps. > H.265 codec, high compression rate, ultra-low bit rate. > Built-in warm light and the max. illumination distance is 30 m. - ROI, SMART H.264+/H.265+ > Rotation mode, WDR, 3D NR, HLC, BLC, digital watermarking > Intelligent monitoring: Intrusion, tripwire > Abnormality detection: Motion detection, video tampering, audio detection, no SD card, SD card full, SD card error, network disconnection, IP conflict, illegal access, and voltage detection. > Supports max. 256 G Micro SD card; built in Mic. > 12 VDC/PoE power supply. > IP67 protection. > SMD Plus 	<p>۹,۰۷۰,۰۰۰</p> <p>+ ۱۰٪ ارزش افزوده</p>
	DH-IPC-HFW2449SP-S-IL	<p>4MP Smart Dual Light Fixed-focal Bullet WizSense Network Camera</p> <ul style="list-style-type: none"> > 4-MP 1/2.9" CMOS image sensor, low luminance, and high definition image. > Outputs max. 4 MP (2688×1520)@20 fps, and supports 2560×1440 @25/30 fps > H.265 codec, high compression rate, ultra-low bit rate. > Built-in warm light/IR LED, the max. illumination distance is 30 m and the max. warm light distance is 30 m. > ROI, SMART H.264+/H.265+, flexible coding > Rotation mode, WDR, 3D NR, HLC, BLC, digital watermarking > Intelligent monitoring: Intrusion, tripwire > Supports max. 256 G Micro SD card; built in MIC. > 12 VDC/PoE power supply, easy for installation. > IP67 protection. > SMD Plus. 	<p>۹,۰۵۰,۰۰۰</p> <p>+ ۱۰٪ ارزش افزوده</p>
	DH-IPC-HFW2441TP-AS	<p>4MP IR Fixed-focal Bullet WizSense Network Camera</p> <ul style="list-style-type: none"> > 4-MP 1/2.9" CMOS image sensor, low luminance, and high definition image. > Outputs max. 4MP (2688×1520)@20fps and supports 2560×1440(2560×1440)@25/30 fps. > H.265 codec, high compression rate, ultra-low bit rate. > Built-in IR LED, and the max. illumination distance is 80 m. > ROI, SMART H.264+/H.265+, flexible coding > Rotation mode, WDR, 3D NR, HLC, BLC, digital watermarking > Intelligent monitoring: Intrusion, tripwire > Abnormality detection: Motion detection, video tampering, audio detection, no SD card, SD card full, SD card error, network disconnection, IP conflict, illegal access, and voltage detection. > Alarm: 1 in, 1 out; audio: 1 in, 1 out; supports max. 256 G Micro SD card; built in MIC. > 12 VDC/PoE power supply, easy for installation. > IP67, IK10 (optional) protection. > SMD Plus. 	<p>۱۰,۹۳۰,۰۰۰</p> <p>+ ۱۰٪ ارزش افزوده</p>
	DH-IPC-HFW2449TP-AS-IL	<p>4MP Smart Dual Light Fixed-focal Bullet WizSense Network Camera</p> <ul style="list-style-type: none"> > 4-MP 1/2.9" CMOS image sensor, low luminance, and high definition image. > Outputs max. 4 MP (2688×1520)@20 fps, and supports 2560×1440 @25/30 fps. > H.265 codec, high compression rate, ultra-low bit rate. > Built-in warm light and IR LED, the max. IR light distance is 60m and max. warm light is 50m. > ROI, SMART H.264+/H.265+, flexible coding > Rotation mode, WDR, 3D NR, HLC, BLC, digital watermarking > Intelligent monitoring: Intrusion, tripwire > Abnormality detection: Motion detection, video tampering, audio detection, no SD card, SD card full, SD card error, network disconnection, IP conflict, illegal access, and voltage detection. > Alarm: 1 in, 1 out; audio: 1 in, 1 out; supports max. 256 G Micro SD card; built in MIC. > 12 VDC/PoE power supply, easy for installation. > IP67, IK10 (optional) protection. > SMD Plus. 	<p>۱۰,۲۰۰,۰۰۰</p> <p>+ ۱۰٪ ارزش افزوده</p>
	DH-IPC-HFW2431TP-ZS	<p>4MP Lite IR Vari-focal Bullet Network Camera</p> <ul style="list-style-type: none"> > 4MP, 1/3" CMOS image sensor, low illumination, high image definition > Outputs 4MP (2560×1440)@25/30 fps, max. supports 4MP (2688×1520)@20 fps > H.265 codec, high compression rate, ultra-low bit rate > Built-in IR LED, max IR distance: 60 m > ROI, SMART H.264+/H.265+, flexible coding > Rotation mode, WDR, 3D NR, HLC, BLC, digital watermarking > Intelligent detection: Intrusion, tripwire > Abnormality detection: Motion detection, video tampering, no SD card, SD card full, SD card error, network disconnected, IP conflict, illegal access, voltage detection > Supports max. 256 GB Micro SD card > 12V DC/PoE power supply > IP67 protection, IK10 protection (optional) 	<p>۱۲,۵۴۰,۰۰۰</p> <p>+ ۱۰٪ ارزش افزوده</p>

NETWORK CAMERA

تصویر	مدل	مشخصات	قیمت
	DH-IPC-HFW2441TP-ZS	<p>4MP IR Vari-focal Bullet WizSense Network Camera</p> <ul style="list-style-type: none"> > 4-MP 1/2.9" CMOS image sensor, low luminance, and high definition image. > Outputs max.4MP(2688x1520)@20fps,and supports2560x1440(2560x1440)@25/30fps. > H.265 codec, high compression rate, ultra-low bit rate. > Built-in IR LED, and the max. illumination distance is 60 m. > ROI, SMART H.264+/H.265+, flexible coding > Rotation mode, WDR, 3D NR, HLC, BLC, digital watermarking > Intelligent monitoring: Intrusion, tripwire > Abnormality detection: Motion detection, video tampering, audio detection, no SD card, SD card full, SD card error, network disconnection, IP conflict, illegal access, and voltage detection. > supports max. 256 G Micro SD card; built in MIC. > 12 VDC/PoE power supply, easy for installation. > IP67, IK10 (optional) protection. > SMD Plus. 	۱۴,۱۴۰,۰۰۰ + ۱۰٪ ارزش افزوده
	DH-IPC-HFW3449EP-AS-LED	<p>4MP Full-color Warm LED Fixed-focal Bullet WizSense Network Camera</p> <ul style="list-style-type: none"> > 4MP, 1/2.7" CMOS image sensor, low illumination, high image definition > Outputs max. 4MP (2688 x 1520) @ 30 fps > H.265 codec, high compression rate, low bit rate > Built-in Warm LED, max. LED distance: 30 m > ROI, SMART H.264+/H.265+, flexible coding > Rotation mode, WDR, 3D NR, HLC, BLC, digital watermarking > Intelligent detection: Intrusion, tripwire > Abnormality detection: Motion detection, video tampering, scene changing, audio detection, SD card error, network disconnection, IP conflict, illegal access, voltage detection > Alarm: 1 in, 1 out; audio: 1 in, 1 out; supports max. 256 G Micro SD card, built-in Mic > 12V DC/PoE power support > IP67 protection 	۱۳,۰۰۰,۰۰۰ + ۱۰٪ ارزش افزوده
	DH-IPC-HFW3449T1P-AS-PV	<p>4MP Smart Dual Light Active Deterrence Fixed-focal Bullet WizSense Network Camera</p> <ul style="list-style-type: none"> > 4-MP1/2.7" CMOS image sensor, low luminance, and high definition image. > Outputs max.4MP(2688x1520)@25/30 fps. > H.265 codec, high compression rate, ultra-low bit rate. > Built-in warm light and IR LED; the max. IR illumination distance is 30 m and warm light distance is 30 m. > ROI, SMART H.264+/H.265+, AI H.264/H.265, flexible coding > Rotation mode, WDR, 3D NR, HLC, BLC, digital watermarking > Intelligent monitoring: Intrusion, tripwire > Abnormality detection: Motion detection, privacy masking, scene changing, audio detection, SD card error, network disconnection IP conflict, illegal access, and voltage detection. > Alarm: 1 in, 1 out; audio: 1 in, 1 out; supports max. 256 G Micro SD card; built-in dual Mic; built-in speaker; support two-way talk. > Sound and light alarm > 12 VDC/PoE power supply. > SMD 4.0. > One-tap arming/disarming through alarm input.> IP67 protection. 	۱۴,۹۵۰,۰۰۰ + ۱۰٪ ارزش افزوده
	DH-IPC-HFW5442EP-S	<p>4MP WDR IR Bullet AI Network Camera</p> <ul style="list-style-type: none"> > 1/1.8" 4Megapixel progressive scan CMOS > H.265&H.264 triple-stream encoding > 25/30fps@2688x1520 > WDR(120dB), Day/Night(ICR), 3D DNR, AWB, AGC, BLC > Multiple network monitoring: Web viewer, CMS(DSS/PSS) & DMSS > 2.8mm fixed lens (3.6mm/6mm optional) > Max. IR LEDs Length 50m > Micro SD memory, IP67 	۱۱,۵۲۰,۰۰۰ + ۱۰٪ ارزش افزوده
	DH-IPC-HFW5449T1P-ASE	<p>4 MP Dual Lens Fixed-focal Bullet WizMind Full-color Network Camera</p> <ul style="list-style-type: none"> > Dual AI sensors with multi-spectral imaging technology > Outputs max. 4 MP (2688 x 1520)@25/30 fps. > Built-in warm light/IR LED, with a maximum illumination distance of 50 m. > ROI, SMART H.264+/H.265+, flexible coding > Rotation mode, DWDR, 3D NR, HLC, BLC, digital watermarking > Intelligent monitoring: Intrusion, tripwire, fast moving; abandoned object, missing object, loitering detection, people gathering, and parking detection. > Face detection: Track, snapshot, snapshot optimization, optimal face snapshot upload, face enhancement, and face exposure. > People counting: Queue management, people counting in area, entered/exited people counting, and generating and exporting report (day/month/year). > Alarm: 1 in, 1 out; audio: 1 in, 1 out; supports max. 256 G Micro SD card; built-in Mic and speaker, support two-way talk. > 12 VDC/PoE power supply. > IP67 protection. 	۱۲,۹۶۰,۰۰۰ + ۱۰٪ ارزش افزوده
	DH-IPC-HFW5442EP-Z4E	<p>4MP IR Vari-focal Bullet WizMind Network Camera</p> <ul style="list-style-type: none"> > 4-MP 1/1.8" CMOS image sensor, low luminance, and high definition image. > Outputs max. 4 MP (2688 x 1520)@30 fps. > H.265 codec, high compression rate, ultra-low bit rate. > Built-in IR LED, and the max. illumination distance is 120 m. > ROI, SMART H.264+/H.265+/AI H.264/H.265, flexible coding > Rotation mode, WDR, 3D NR, HLC, BLC, digital watermarking > Intelligent monitoring: Intrusion, tripwire, fast moving; abandoned object, missing object, loitering detection, people gathering, parking detection, heat map and face detection. > Abnormality detection: Motion detection, video tampering, scene changing, audio detection, no SD card, SD card full, SD card error, network disconnection > Alarm: 2 in, 1 out; audio: 1 in, 1 out; supports max. 256 G Micro SD card. > 12 VDC/PoE power supply, easy for installation. > ePoE; IP67, IK10 protection. > SMD 3.0 	۱۳,۶۸۰,۰۰۰ + ۱۰٪ ارزش افزوده
	DH-IPC-HFW2549SP-S-IL	<p>5MP Smart Dual Light Fixed-focal Bullet WizSense Network Camera</p> <ul style="list-style-type: none"> > 5-MP 1/2.7" CMOS image sensor, low luminance, and high definition image. > Outputs max.5MP(2960x1668)@20fps,and supports 2688x1520(2688x1520)@25/30 fps. > H.265 codec, high compression rate, ultra-low bit rate. > Built-in warm light and IR LED, the max. illumination distance is 30 m and the max. warm light distance is 30 m. > ROI, SMART H.264+/H.265+, flexible coding > Rotation mode, WDR, 3D NR, HLC, BLC > Intelligent monitoring: Intrusion, tripwire > Abnormality detection: Motion detection, video tampering, audio detection, no SD card, SD card full, SD card error, network disconnection, IP conflict, illegal access, and voltage detection. > Supports max. 256 G Micro SD card; built in MIC. > 12 VDC/PoE power supply, easy for installation.> IP67 protection.> SMD Plus 	۱۱,۲۹۰,۰۰۰ + ۱۰٪ ارزش افزوده
	DH-IPC-HFW2549TP-AS-IL	<p>5MP Smart Dual Light Fixed-focal Bullet WizSense Network Camera</p> <ul style="list-style-type: none"> > 5-MP 1/2.7" CMOS image sensor, low luminance, and high definition image. > Outputs max.5MP(2960x1668)@20fps,and supports 2688x1520(2688x1520)@25/30fps. > H.265 codec, high compression rate, ultra-low bit rate. > Built-in warm light and IR LED, the max. IR light distance is 60 m and max. warm light is 50m. > ROI, SMART H.264+/H.265+, flexible coding > Rotation mode, WDR, 3D NR, HLC, BLC, digital watermarking > Intelligent monitoring: Intrusion, tripwire > Abnormality detection: Motion detection, video tampering, audio detection, no SD card, SD card full, SD card error, network disconnection, IP conflict, illegal access, and voltage detection. > Alarm: 1 in, 1 out; audio: 1 in, 1 out; supports max. 256 G Micro SD card; built in MIC. > 12 VDC/PoE power supply, easy for installation. > IP67, IK10 (optional) protection. > SMD Plus. 	۱۱,۲۹۰,۰۰۰ + ۱۰٪ ارزش افزوده

NETWORK CAMERA

تصویر	مدل	مشخصات	قیمت
	DH-IPC-HFW2531TP-ZS	5MP Lite IR Vari-focal Bullet Network Camera > 5MP, 1/2.7" CMOS image sensor, low illumination, high image definition > Outputs max.5MP(2592x1944) @20 fps, and supports2688x1520(2688x1520) @25/30 fps > H.265 codec, high compression rate, ultra-low bit rate > Built-in IR LED, max IR distance: 60 m > ROI, SMART H.264+/H.265+, flexible coding > Rotation mode, WDR, 3D NR, HLC, BLC, digital watermarking > Intelligent detection: Intrusion, tripwire > Abnormality detection: Motion detection, video tampering, no SD card, SD card full, SD card error, network disconnected, IP conflict, illegal access, voltage detection > Supports max. 256 GB Micro SD card > 12V DC/PoE power supply > IP67 protection	۱۴,۶۹۰,۰۰۰ + ۱۰٪ ارزش افزوده
	DH-IPC-HFW2541TP-ZS	5MP IR Vari-focal Bullet WizSense Network Camera > 5-MP 1/2.7" CMOS image sensor, low luminance, and high definition image. > Outputs max.5MP(2960x1668)@20 fps, and supports2688x1520(2688x1520) @25/30 fps. > H.265 codec, high compression rate, ultra-low bit rate. > Built-in IR LED, and the max. illumination distance is 60 m. > ROI, SMART H.264+/H.265+, flexible coding, > Rotation mode, WDR, 3D NR, HLC, BLC, digital watermarking > Intelligent monitoring: Intrusion, tripwire . > Abnormality detection: Motion detection, video tampering, audio detection, no SD card, SD card full, SD card error, network disconnection, IP conflict, illegal access, and voltage detection. > Alarm: 1 in, 1 out (Only - ZAS supports); audio: 1 in, 1 out (Only - ZAS supports); supports max. 256 G Micro SD card; built in MIC. > 12 VDC/PoE power supply, easy for installation. > IP67, IK10 (optional) protection. > SMD Plus.	۱۵,۵۵۰,۰۰۰ + ۱۰٪ ارزش افزوده
	DH-IPC-HFW3549T1P-AS-PV-S3	5MP Smart Dual Illumination Active Deterrence Fixed-focal Bullet WizSense Network Camera > 5-MP 1/2.7" CMOS imagesensor, low luminance, and high definition image. > Outputs max.5MP(2592x1944)@20fps and supports4MP(2688x1520)@25/30fps > H.265 codec, high compression rate, ultra-low bit rate. > Built-in warm light and IR LED; the max. IR illumination distance is 30 m and warm light distance is 30 m. > ROI, SMART H.264+/H.265+, AI H.264/H.265, flexible coding > Rotation mode, WDR, 3D NR, HLC, BLC, digital watermarking> Intelligent monitoring: Intrusion, tripwire >network disconnection, IP conflict, illegal access, and voltage detection. > Alarm: 1 in, 1 out; audio: 1 in, 1 out; supports max. 256 G Micro SD card; built-in dual MICs; 1-ch speaker; support two-way talk. > 12 VDC/PoE power supply.> Sound and light alarm (red and blue lights). > IP67 protection.> SMD 3.0.> One-click arming/disarming through alarm input	۱۴,۱۱۰,۰۰۰ + ۱۰٪ ارزش افزوده
	DH-IPC-HFW2841SP-S	8MP IR Fixed-focal Bullet WizSense Network Camera > 8-MP 1/2.7" CMOS image sensor, low luminance, and high definition image. > Outputs max.8MP(3840x2160) @20 fps, and supports 2688x1520(2688x1520)@25/30 fps. > H.265 codec, high compression rate, ultra-low bit rate. > Built-in IR LED, and the max. illumination distance is 30 m. > ROI, SMART H.264+/H.265+, flexible coding > Rotation mode, WDR, 3D NR, HLC, BLC, digital watermarking > Intelligent monitoring: Intrusion, tripwire > Abnormality detection: Motion detection, video tampering, audio detection, SD card error, network disconnection, IP conflict, illegal access, and voltage detection. > Supports max. 256 G Micro SD card; built in MIC. > 12 VDC/PoE power supply. > IP67 protection. > SMD Plus.	۱۶,۶۸۰,۰۰۰ + ۱۰٪ ارزش افزوده
	DH-IPC-HFW2849SP-S-IL	8MP Smart Dual Light Fixed-focal Bullet WizSense Network Camera > 8-MP 1/2.7" CMOS image sensor, low luminance, and high definition image. > Outputs max.8MP(3840x2160) @20 fps, and supports 2688x1520(2688x1520) @25/30 fps.. > H.265 codec, high compression rate, ultra-low bit rate. > Built-in warm light and IR LED, the max. illumination distance is 30 m and the max. warm light distance is 30 m. > ROI, SMART H.264+/H.265+, flexible coding > Rotation mode, WDR, 3D NR, HLC, BLC, digital watermarking > Intelligent monitoring: Intrusion, tripwire > Abnormality detection: Motion detection, video tampering, audio detection, no SD card, SD card full, SD card error, network disconnection, IP conflict, illegal access, and voltage detection. > Supports max. 256 G Micro SD card; built in MIC. > 12 VDC/PoE power supply, easy for installation.> IP67 protection.> SMD Plus.	۱۳,۵۶۰,۰۰۰ + ۱۰٪ ارزش افزوده
	DH-IPC-HFW2849TP-AS-IL	8MP Smart Dual Light Fixed-focal Bullet WizSense Network Camera > 8-MP 1/2.7" CMOS image sensor, low luminance, and high definition image. > Outputs max.8MP(3840x2160) @20 fps, and supports 2688x1520(2688x1520) @25/30 fps.. > H.265 codec, high compression rate, ultra-low bit rate. > Built-in warm light and IR LED, the max. IR light distance is 60m and max. warm light is 50m. > ROI, SMART H.264+/H.265+, flexible coding > Rotation mode, WDR, 3D NR, HLC, BLC, digital watermarking > Intelligent monitoring: Intrusion, tripwire > Abnormality detection: Motion detection, video tampering, audio detection, no SD card, SD card full, SD card error, network disconnection, IP conflict, illegal access, and voltage detection. > Alarm: 1 in, 1 out; audio: 1 in, 1 out; supports max. 256 G Micro SD card; built in MIC. > 12 VDC/PoE power supply, easy for installation. > IP67, IK10 (optional) protection. > SMD Plus.	۱۵,۵۳۰,۰۰۰ + ۱۰٪ ارزش افزوده
	DH-IPC-HFW2831TP-ZS	8MP Lite IR Vari-focal Bullet Network Camera > 8MP, 1/2.7" CMOS image sensor, low illumination, high image definition > Outputs max. 8MP (3840x2160) @15fps, and supports2688x1520(2688x1520) @25/30 fps > H.265 codec, high compression rate, ultra-low bit rate > Built-in IR LED, max IR distance: 60 m > ROI, SMART H.264+/H.265+, flexible coding > Rotation mode, WDR, 3D NR, HLC, BLC, digital watermarking > Intelligent detection: Intrusion, tripwire > Abnormality detection: Motion detection, video tampering, no SD card, SD card full, SD card error, network disconnection, IP conflict, illegal access, voltage detection > Supports max. 256 GB Micro SD card > 12V DC/PoE power supply > IP67 protection	۱۶,۵۰۰,۰۰۰ + ۱۰٪ ارزش افزوده
	DH-IPC-HFW2841TP-ZS	8MP IR Vari-focal Bullet WizSense Network Camera > 8-MP 1/2.7" CMOS image sensor, low luminance, and high definition image. > Outputs max.8MP(3840x2160) @20 fps, and supports 2688x1520(2688x1520) @25/30 fps. > H.265 codec, high compression rate, ultra-low bit rate. > Built-in IR LED, and the max. illumination distance is 60 m. > ROI, SMART H.264+/H.265+, flexible coding > Rotation mode, WDR, 3D NR, HLC, BLC, digital watermarking > Intelligent monitoring: Intrusion, tripwire > Abnormality detection: Motion detection, video tampering, audio detection, no SD card, SD card full, SD card error, network disconnection, IP conflict, illegal access, and voltage detection. > supports max. 256 G Micro SD card; built in MIC. > 12 VDC/PoE power supply, easy for installation. > IP67, IK10 (optional) protection. > SMD Plus.	۱۹,۲۰۰,۰۰۰ + ۱۰٪ ارزش افزوده

NETWORK CAMERA

تصویر	مدل	مشخصات	قیمت
	DH-IPC-HFW2841TP-ZAS	<p>8MP IR Vari-focal Bullet WizSense Network Camera</p> <ul style="list-style-type: none"> > 8-MP 1/2.7" CMOS image sensor, low luminance, and high definition image. > Outputs max.8MP(3840x2160)@20 fps,and supports 2688 x1520(2688 x1520)@25/30 fps. > H.265 codec, high compression rate, ultra-low bit rate. > Built-in IR LED, and the max. illumination distance is 60 m. > ROI, SMART H.264+/H.265+, flexible coding > Rotation mode, WDR, 3D NR, HLC, BLC, digital watermarking > Intelligibility monitoring: Intrusion, tripwire > Abnormality detection: Motion detection, video tampering, audio detection, noSDcard,SD card full,SD card error,network disconnection,IPconflict,illegal access,and voltage detection. > Alarm: 1 in, 1 out; audio: 1 in, 1 out; supports max. 256 G Micro SD card; built in MIC. > 12 VDC/PoE power supply, easy for installation. > IP67, IK10 (optional) protection. > SMD Plus. 	<p>۱۹,۲۰۰,۰۰۰</p> <p>+ ۱۰٪ ارزش افزوده</p>
	DH-IPC-HFW3849T1P-ZAS-PV-S5	<p>8MP Smart Dual Light Active Deterrence Vari-focal Bullet WizSense Network Camera</p> <ul style="list-style-type: none"> > 8-MP 1/2.8" CMOS image sensor, low luminance, and high definition image. > Outputs max. 8 MP (3840 x 2160) @25/30 fps. > H.265 codec, high compression rate, ultra-low bit rate. > Built-in warm light and IR LED; the max. IR illumination distance is 50 m and warm light distance is 40 m. > ROI, SMART H.264+/H.265+, AI H.264/H.265, flexible coding > Rotation mode, WDR, 3D NR, HLC, BLC, digital watermarking > Intelligibility monitoring: Intrusion, tripwire > Abnormality detection: Motion detection, privacy masking, scene changing > Sound and light alarm (red and blue lights). > Alarm: 1 in, 1 out; audio: 1 in, 1 out; supports max. 512 G Micro SD card; built-in dual Mic; 1-ch speaker; support two-way talk. > 12 VDC/PoE power supply. > IP67 > SMD4.0 > SMDarea can be set in warm/light areas that support triggering alarms. > Supports AI SSA and one-tap arming and disarming. 	<p>۳۲,۰۰۰,۰۰۰</p> <p>+ ۱۰٪ ارزش افزوده</p>
	DH-IPC-HFW5842EP-ZE	<p>8MP IR Vari-focal Bullet WizMind Network Camera</p> <ul style="list-style-type: none"> > 8-MP 1/1.8" CMOS image sensor, low luminance, and high definition image. > Outputs max. 8MP (3840x2160) @25/30 fps. > Built-in IR LED, and the max. illumination distance is 60 m. > ROI, SVC, SMART H.264+/H.265+, AI H.264/H.265, encoding after filter, flexible coding, applicable to various bandwidth and storage environments. > Rotation mode, WDR, 3D NR, HLC, BLC, digital watermarking, applicable to various monitoring scenes. > With deep learning algorithm, it supports: video metadata, smart sound detection, IVS, face detection, smart object detection, and people counting, etc. > Alarm: 2 in, 1 out; audio: 1 in, 1 out; supports max. 512 GB Micro SD card, built-in MIC. > 12 VDC/PoE power supply; ePoE. > IP67 and IK10 protection. 	<p>۳۵,۲۸۰,۰۰۰</p> <p>+ ۱۰٪ ارزش افزوده</p>
	DH-IPC-HF8232FP	<p>2MP Starlight Box Network Camera</p> <ul style="list-style-type: none"> > 1/1.8" 2Megapixel progressive scan CMOS > H.265&H.264 triple-stream encoding > 50/60fps@1080P(1920x1080) > WDR(120dB), Day/Night(ICR), 3DNR,AWB,AGC,BLC > Multiple network monitoring: Web viewer, CMS(DSS/PSS) & DMSS > Auto back focus(ABF) > Micro SD memory, PoE 	<p>تماس بگیرید</p>
	DH-IPC-HF8835FP	<p>Micro Four Thirds 8MP Progressive-scan CMOS Sensor</p> <ul style="list-style-type: none"> >M43 Lens Interface >4K (3840 x 2160) at 30 fps >Smart H.265+ and H.264 Dual Codec >Triple-stream Encoding >Starlight+ Technology for Ultra-low Light Sensitivity >Ultra Wide Dynamic Range (140 dB) and True Day/Night (ICR) >Intelligent Video System with Business Analytics >PoE Support 	<p>۳۹,۶۰۰,۰۰۰</p> <p>+ ۱۰٪ ارزش افزوده</p>
	DH-IPC-HDW1230T1P-A	<p>2 MP Entry IR Fixed-focal Eyeball Network Camera</p> <ul style="list-style-type: none"> > 2-MP 1/2.8" CMOS image sensor, low luminance, and high definition image > H.265 codec, high compression rate, ultra-lowbit rate. > Outputs max. 2 MP (1920 x 1080)@25/30 fps > DWDR, Day/Night(ICR), 3DNR, HLC, AGC, BLC > Abnormality detection: Motion detection, video tampering, network disconnection, IP conflict, illegal access > Max IR LEDs Length 30m > 12V DC/PoE power support > Built-in MIC. > IP67 	<p>۴,۴۴۰,۰۰۰</p> <p>+ ۱۰٪ ارزش افزوده</p>
	DH-IPC-HDW1239T1P-LED	<p>2MP Lite Full-color Fixed-focal Eyeball Network Camera</p> <ul style="list-style-type: none"> > 2MP, 1/2.7" CMOS image sensor, low illumination, high image definition > Outputs max. 2MP (1920 x 1080) @25/30 fps > H.265 codec, high compression rate, ultra-low bit rate > Built-in warm light, and the max. illumination distance is 15 m > ROI, SMART H.264/H.265, flexible coding > Rotation mode, DWDR, 3D DNR, HLC, BLC, digital watermarking > Abnormality detection: Motion detection, video tampering, network disconnection, IP conflict, illegal access > 12V DC/PoE power support > IP67 protection 	<p>۴,۷۸۰,۰۰۰</p> <p>+ ۱۰٪ ارزش افزوده</p>
	DH-IPC-HDW1239T1P-A-LED	<p>2 MP Entry Full-color Fixed-focal Eyeball Network Camera</p> <ul style="list-style-type: none"> > 2-MP 1/2.8" CMOS image sensor, low luminance, and high definition image > H.265 codec, high compression rate, ultra-low bit rate > Outputs max. 2 MP (1920 x 1080)@25/30 fps > Rotation mode, DWDR, 3D NR, HLC, BLC, digital watermarking, applicable to various monitoring scenes > Abnormality detection: Motion detection, video tampering, network disconnection, IP conflict, illegal access > Built-in warm light, and the max. illumination distance is 15 m. > 12V DC/PoE power support > Built-in MIC > IP67 	<p>۵,۴۵۰,۰۰۰</p> <p>+ ۱۰٪ ارزش افزوده</p>

NETWORK CAMERA

تصویر	مدل	مشخصات	قیمت
	DH-IPC-HDW1239T1P-A-IL-S6	<p>2MP Entry Smart Dual Light Fixed-focal Eyeball Network Camera</p> <ul style="list-style-type: none"> > 2-MP 1/2.8" CMOS image sensor, low luminance, and high definition image. > Outputs max. 2 MP (1920×1080)@25/30 fps. H.265 codec, high compression rate, ultra-low bit rate. > Built-in multi-core light, the maxIR distance is30m and the max.warmlight distance is30 m. > DWDR, 3D NR, HLC, BLC, digital watermarking, applicable to various monitoring scenes. > ROI, SMART H.264+/H.265+, flexible coding > Abnormality detection: Motion detection, video tampering, audio detection, network disconnection, IP conflict, illegal access. > Built in Mic. > 12 VDC/PoE power supply, easy for installation. > IP67 protection. > Supports human detection. 	<p>۵,۴۵۰,۰۰۰</p> <p>+ ۱۰٪ ارزش افزوده</p>
	DH-IPC-HDBW2230EP-S	<p>2MP Lite IR Fixed-focal Dome Network Camera</p> <ul style="list-style-type: none"> > 2MP 1/2.8" CMOS image sensor, low luminance, and high definition image. > Outputs max. 2MP (1920 × 1080) @25/30 fps. > H.265 codec, high compression rate, ultra-low bit rate. > Built-in IR LED, and the max. illumination distance is 30 m. > ROI, SMART H.264+/H.265+, flexible coding > Rotation mode, DWDR, 3D NR, HLC, BLC, digital watermarking > Intelligent monitoring: Intrusion, tripwire. > Abnormality detection: Motion detection, privacy masking, no SD card, SD card full, SD card error, network disconnection, IP conflict, illegal access, and voltage detection. > Max. 256 G micro SD card. > 12V DC/PoE power supply. > IP67, IK10 protection. 	<p>۴,۸۰۰,۰۰۰</p> <p>+ ۱۰٪ ارزش افزوده</p>
	DH-IPC-HDW2231TP-AS	<p>2MP Lite IR Fixed-focal Eyeball Network Camera</p> <ul style="list-style-type: none"> > 2MP, 1/2.8" CMOS image sensor, low illumination, high image definition > Outputs max. 2MP (1920 × 1080) @25/30 fps > H.265 codec, high compression rate, ultra-low bit rate > Built-in IR LED, max. IR distance: 30 m > ROI, SMART H.264+/H.265+, flexible coding > Rotation mode, WDR, 3D NR, HLC, BLC, digital watermarking > Intelligent detection: Intrusion, tripwire > Abnormality detection: Motion detection, video tampering, no SD card, SD card full, SD card error, network disconnection, IP conflict, illegal access, voltage detection > Max. 256 GB Micro SD card, built-in Mic > 12V DC/PoE power supply > IP67 protection 	<p>۵,۹۴۰,۰۰۰</p> <p>+ ۱۰٪ ارزش افزوده</p>
	DH-IPC-HDBW3241RP-ZS	<p>2MP IR Vari-focal Dome WizSense Network Camera</p> <ul style="list-style-type: none"> > 2MP, 1/2.8" CMOS image sensor, low illumination, high image definition > Outputs max. 2MP (1920 × 1080)@30 fps > H.265 codec, high compression rate, low bit rate > Built-in IR LED, max. IR distance: 40 m > ROI, SMART H.264+/H.265+, flexible coding > Rotation mode, WDR, 3D DNR, HLC, BLC, digital watermarking > Intelligent detection: Intrusion, tripwire > Abnormality detection: Motion detection, video tampering, scene changing, no SD card, SD card full, SD card error, network disconnection, IP conflict, illegal access, voltage detection > Supports max. 256 G Micro SD card > 12V DC/POE power supply > IP67, IK10 protection 	<p>۶,۶۳۰,۰۰۰</p> <p>+ ۱۰٪ ارزش افزوده</p>
	DH-IPC-HDBW8231EP-Z5E	<p>2MP WDR IR Dome Network Camera</p> <ul style="list-style-type: none"> > 1/2.8" 2Megapixel progressive scan STARVIS™ CMOS > H.265&H.264 triple-stream encoding > 50/60fps@1080P(1920×1080) > WDR(140dB), Day/Night(ICR), 3DNR,AWB,AGC,BLC > Multiple network monitoring: Web viewer, CMS(DSS/PSS) & DMSS > 7mm ~35mm motorized lens > Max. IR LEDs Length 100m > Micro SD memory,IP67,IK10,PoE+ 	<p>۲۵,۹۲۰,۰۰۰</p> <p>+ ۱۰٪ ارزش افزوده</p>
	DH-IPC-D2A30P-Z	<p>3MP IR Dome Network Camera</p> <ul style="list-style-type: none"> > 1/3" 3Megapixel progressive CMOS > H.264+ & H.264 dual-stream encoding > 20fps@3M(2048×1536) & 25/30fps@2M(1920×1080) > DWDR, Day/Night(ICR), 3DNR, AWB, AGC, BLC > Multiple network monitoring: Web viewer, CMS(DSS/PSS) & DMSS > Micro SD card slot, up to 128GB > 2.7~12mm varifocal lens > Max IR LEDs Length 30m > IP67, IK10,PoE 	<p>۷,۲۰۰,۰۰۰</p> <p>+ ۱۰٪ ارزش افزوده</p>
	DH-IPC-HDBW1435EP-W	<p>4MP IR Dome Wi-Fi Camera</p> <ul style="list-style-type: none"> > 4MP, 1/3" CMOS image sensor, low illuminance, high image definition > Outputs max. 4MP (2560 × 1440) @20 fps > H.265 codec, high compression rate, ultra-low bit rate - Max. IR distance: 30 m > ROI, SMART H.264/H.265, flexible coding. > Rotation mode, WDR, 3D DNR, HLC, BLC, digital watermarking > Supports 256 G Micro SD card > 12V DC power supply, easy for installation > IP67, IK10 protection 	<p>۶,۴۸۰,۰۰۰</p> <p>+ ۱۰٪ ارزش افزوده</p>
	DH-IPC-HDW1439T1P-LED	<p>4MP Entry Full-color Fixed-focal Eyeball Network Camera</p> <ul style="list-style-type: none"> > 4-MP 1/3" CMOS image sensor, low luminance, and high definition image. > Outputs max. 4 MP (2560 × 1440)@25/30 fps. > H.265 codec, high compression rate, ultra-low bit rate. > Built-in warm light, and the max. illumination distance is 15 m. > ROI, SMART H.264+/H.265+, flexible coding > Rotation mode, WDR, 3D NR, HLC, BLC, digital watermarking > Abnormality detection: Motion detection, video tampering, network disconnection, IP conflict, illegal access, and voltage detection. > 12 VDC/PoE power supply. > IP67 protection. 	<p>۶,۴۹۰,۰۰۰</p> <p>+ ۱۰٪ ارزش افزوده</p>





NETWORK CAMERA

تصویر	مدل	مشخصات	قیمت
	DH-IPC-HDW1439T1P-A-LED	<p>4 MP Entry Full-color Fixed-focal Eyeball Network Camera</p> <ul style="list-style-type: none"> > 4-MP 1/3" CMOS image sensor, low luminance, and high definition image > H.265 codec, high compression rate, ultra-low bit rate > Outputs max. 4 MP (2560 × 1440)@25/30 fps > Rotation mode, DWDR, 3D NR, HLC, BLC, digital watermarking, applicable to various monitoring scenes > Abnormality detection: Motion detection, video tampering, network disconnection, IP conflict, illegal access > Built-in warm light, and the max. illumination distance is 15 m. > 12V DC/PoE power support > Built-in MIC > IP67 	<p>۶,۶۵۰,۰۰۰</p> <p>+ ۱۰٪ ارزش افزوده</p>
	DH-IPC-HDW2449TP-S-LED	<p>4MP Full-color Fixed-focal Eyeball Wizsense Network Camera</p> <ul style="list-style-type: none"> > 4-MP 1/2.9" CMOS image sensor, low luminance, and high definition image. > Outputs max. 4 MP (2688 × 1520)@20 fps, and supports (2560×1440)@25/30 fps. > H.265 codec, high compression rate, ultra-low bit rate. > Built-in warm light and the max. illumination distance is 30 m. > ROI, SMART H.264+/H.265+, flexible coding > Rotation mode, WDR, 3D NR, HLC, BLC, digital watermarking > Intelligent monitoring: Intrusion, tripwire > Abnormality detection: Motion detection, video tampering, audio detection, no SD card, SD card full, SD card error, network disconnection, IP conflict, illegal access, and voltage detection. > Supports max. 256 G Micro SD card; built in Mic. > 12 VDC/PoE power supply. > IP67 protection. > SMD Plus. 	<p>۹,۳۰۰,۰۰۰</p> <p>+ ۱۰٪ ارزش افزوده</p>
	DH-IPC-HDW2449TP-S-IL	<p>4MP Smart Dual Light Fixed-focal Eyeball WizSense Network Camera</p> <ul style="list-style-type: none"> > 4-MP 1/2.9" CMOS image sensor, low luminance, and high definition image. > Outputs max. 4 MP (2688 × 1520)@20 fps, and supports 2560 × 1440 @25/30 fps > H.265 codec, high compression rate, ultra-low bit rate. > Built-in warm light/IR LED, the max. illumination distance is 30 m and the max. warm light distance is 30 m. > ROI, SMART H.264+/H.265+, flexible coding > Rotation mode, WDR, 3D NR, HLC, BLC, digital watermarking > Intelligent monitoring: Intrusion, tripwire > Supports max. 256 G Micro SD card; built in MIC. > 12 VDC/PoE power supply, easy for installation. > IP67 protection. > SMD Plus. 	<p>۸,۴۷۰,۰۰۰</p> <p>+ ۱۰٪ ارزش افزوده</p>
	DH-IPC-HDW3449HP-AS-PV	<p>4MP Smart Dual Illumination Active Deterrence Fixed-focal Eyeball WizSense Network Camera</p> <ul style="list-style-type: none"> > 4-MP 1/2.7" CMOS image sensor, @25/30 fps. > H.265 codec, high compression rate, ultra-low bit rate. > Built-in warm light and IR LED; the max. IR illumination distance is 30m and warm light distance is 30 m. > ROI, SMART H.264+/H.265+, AI H.264/H.265, flexible coding > Rotation mode, WDR, 3D NR, HLC, BLC, digital watermarking > Intelligent monitoring: Intrusion, tripwire > Abnormality detection: Motion detection, privacy masking, scene changing, audio detection, no SD card, SD card full, SD card error, network disconnection, IP conflict, illegal access, and voltage detection. > Alarm: 1 in, 1 out; audio: 1 in, 1 out; supports max. 256 G Micro SD card; built-in dual Mic; 1-ch speaker; support two-way talk. > Sound and light alarm (red and blue lights). > 12 VDC/PoE power supply. > IP67 protection. > SMD 4.0. 	<p>۱۱,۵۲۰,۰۰۰</p> <p>+ ۱۰٪ ارزش افزوده</p>
	DH-IPC-HDW5442TMP-AS	<p>4MP WDR Eyeball AI Network Camera</p> <ul style="list-style-type: none"> > 1/1.8" 4Megapixel progressive scan CMOS > ROI, SMART H.264+/H.265+, flexible coding > 25/30 fps@2688 × 1520, 50/60 fps@1080P (1920 × 1080) > WDR (140 dB), Day/Night (Electronic), 3D DNR, AWB, AGC, BLC > Multiple network monitoring: Web viewer, CMS (DSS/PSS) & DMSS > 2.8 mm fixed lens > Built-in MIC · Max. LEDs Length > Micro SD memory, IP67 	<p>۱۲,۱۲۰,۰۰۰</p> <p>+ ۱۰٪ ارزش افزوده</p>
	DH-IPC-HDW5442TMP-AS-LED	<p>4MP WDR Eyeball WizMind Network Camera</p> <ul style="list-style-type: none"> > 1/1.8" 4Megapixel progressive scan CMOS > ROI, SMART H.264+/H.265+, flexible coding, applicable to various bandwidth and storage environments > 25/30 fps@2688 × 1520, 50/60 fps@1080P (1920 × 1080) > WDR (140 dB), Day/Night (Electronic), 3D DNR, AWB, AGC, BLC > Multiple network monitoring: Web viewer, CMS (DSS/PSS) & DMSS > 2.8 mm fixed lens (3.6 mm, 6.0 mm optional) > Built-in MIC > Max. LEDs Length 20 m > Micro SD memory, IP67 	<p>۱۱,۵۲۰,۰۰۰</p> <p>+ ۱۰٪ ارزش افزوده</p>
	DH-IPC-HDBW5442RP-ASE-NI	<p>4MP Pro AI Full-color Fixed-focal Dome Network Camera</p> <ul style="list-style-type: none"> > 1/1.8" 4Megapixel progressive scan CMOS > H.265 & H.264 triple-stream encoding > 25/30 fps@2688 × 1520, 50/60 fps@1080 (1920 × 1080) > WDR (140 dB), Day/Night (Electronic), 3D DNR, AWB, AGC, BLC > Multiple network monitoring: Web viewer, CMS (DSS/PSS) & DMSS > 3.6 mm fixed lens 	<p>۱۲,۲۴۰,۰۰۰</p> <p>+ ۱۰٪ ارزش افزوده</p>
	DH-IPC-HDBW5431EP-ZE	<p>4MP WDR IR Dome Network Camera</p> <ul style="list-style-type: none"> > 1/3" 4Megapixel progressive scan CMOS > H.265 & H.264 triple-stream encoding > 25/30 fps@4Mp(2688×1520) > WDR(120dB), Day/Night(ICR), 3DNR, AWB, AGC, BLC > Multiple network monitoring: Web viewer, CMS(DSS/PSS) & DMSS > 2.7mm ~13.5mm motorized lens > Max. IR LEDs Length 50m > Micro SD card memory, IP67, IK10, PoE+ 	<p>۱۱,۹۵۰,۰۰۰</p> <p>+ ۱۰٪ ارزش افزوده</p>

NETWORK CAMERA

تصویر	مدل	مشخصات	قیمت
	DH-IPC-HDW2531TP-AS	<p>5MP Lite IR Fixed-focal Eyeball Network Camera</p> <ul style="list-style-type: none"> > 5MP, 1/2.7" CMOS image sensor, low illumination, high image definition > Outputs max.5MP(2592x1944) @20fps, and supports 2688x1520 (2688x1520)@25/30fps > H.265 codec, high compression rate, ultra-low bit rate > Built-in IR LED, max IR distance: 40 m > ROI, SMART H.264+/H.265+, flexible coding > Rotation mode, WDR, 3D NR, HLC, BLC, digital watermarking > Intelligent detection: Intrusion, tripwire > Abnormality detection: Motion detection, video tampering, no SD card, SD card full, SD card error, network disconnected, IP conflict, illegal access, voltage detection > Supports max. 256 GB Micro SD card, built-in Mic > 12V DC/PoE power supply > IP67 protection 	<p>۹,۹۴۰,۰۰۰</p> <p>+ ۱۰٪ ارزش افزوده</p>
	DH-IPC-HDW2549TP-S-IL	<p>5MP Smart Dual Light Fixed-focal Eyeball WizSense Network Camera</p> <ul style="list-style-type: none"> > 5-MP 1/2.7" CMOS image sensor, low luminance, and high definition image. > Outputs max.5MP(2960x1668) @20 fps, and supports 2688x1520 (2688x1520)@25/30 fps. > H.265 codec, high compression rate, ultra-low bit rate. > Built-in warm light and IR LED, the max. illumination distance is 30 m and the max. warm light distance is 30 m. > ROI, SMART H.264+/H.265+, flexible coding > Rotation mode, WDR, 3D NR, HLC, BLC, digital watermarking > Intelligent monitoring: Intrusion, tripwire > Abnormality detection: Motion detection, video tampering, audio detection, no SD card, SD card full, SD card error, network disconnection, IP conflict, illegal access, and voltage detection. > Supports max. 256 G Micro SD card; built in MIC. > 12 VDC/PoE power supply, easy for installation.> IP67 protection.> SMD Plus. 	<p>۱۴,۱۲۰,۰۰۰</p> <p>+ ۱۰٪ ارزش افزوده</p>
	DH-IPC-HDW2531TP-ZS	<p>5MP Lite IR Vari-focal Eyeball Network Camera</p> <ul style="list-style-type: none"> > 5MP, 1/2.7" CMOS image sensor, low illumination, high image definition > Outputs max.5MP(2592x1944) @20 fps, and supports 2688x1520(2688x1520)@25/30 fps > H.265 codec, high compression rate, ultra-low bit rate > Built-in IR LED, max IR distance: 40 m > ROI, SMART H.264+/H.265+, flexible coding > Rotation mode, WDR, 3D NR, HLC, BLC, digital watermarking > Intelligent detection: Intrusion, tripwire > Abnormality detection: Motion detection, video tampering, no SD card, SD card full, SD card error, network disconnected, IP conflict, illegal access, voltage detection > Supports max. 256 GB Micro SD card> 12V DC/PoE power supply > IP67 protection 	<p>۱۲,۵۴۰,۰۰۰</p> <p>+ ۱۰٪ ارزش افزوده</p>
	DH-IPC-HDW2541TP-ZS	<p>5MP IR Vari-focal Eyeball WizSense Network Camera</p> <ul style="list-style-type: none"> > 5-MP 1/2.7" CMOS image sensor, low luminance, and high definition image. > Outputs max.5MP(2960x1668)@20fps, and supports 2688x1520(2688x1520)@25/30fps. > H.265 codec, high compression rate, ultra-low bit rate. > Built-in IR LED, and the max. illumination distance is 40 m. > ROI, SMART H.264+/H.265+, flexible coding. > Rotation mode, WDR, 3D NR, HLC, BLC, digital watermarking > Intelligent monitoring: Intrusion, tripwire > Abnormality detection: Motion detection, video tampering, audio detection, no SD card, SD card full, SD card error, network disconnection, IP conflict, illegal access, and voltage detection. > Supports max. 256 G Micro SD card; built in MIC. > 12 VDC/PoE power supply, easy for installation. > IP67 protection.> SMD Plus. 	<p>۱۴,۴۰۰,۰۰۰</p> <p>+ ۱۰٪ ارزش افزوده</p>
	DH-IPC-HDW3549HP-AS-PV	<p>5MP Smart Dual Light Active Deterrence Fixed-focal Eyeball WizSense Network Camera</p> <ul style="list-style-type: none"> > 5-MP 1/2.7" CMOS image sensor, low luminance, and high definition image. > Outputs max. 5 MP (2960 x 1668) @20 fps and supports 4 MP (2688 x 1520)@25/30 fps. > H.265 codec, high compression rate, ultra-low bit rate. > Built-in warm light and IRLed; IR illumination distance is 30m and warm light distance is 30 m. > ROI, SMART H.264+/H.265+, AI H.264/H.265, flexible coding > Rotation mode, WDR, 3D NR, HLC, BLC, digital watermarking > Intelligent monitoring: Intrusion, tripwire > Abnormality detection: Motion detection, privacy masking, scene changing, audio detection, SD card error, network disconnection, IP conflict, illegal access, and voltage detection. > Alarm: 1 in, 1 out; audio: 1 in, 1 out; supports max. 256 G Micro SD card; built-in dual Mic; built-in speaker; 1-ch speaker; support two-way talk. > 12 VDC/PoE power supply.> IP67 protection. > Sound and light alarm (red and blue lights). > SMD 4.0. > One-tap arming/disarming through alarm input. 	<p>۱۲,۸۲۰,۰۰۰</p> <p>+ ۱۰٪ ارزش افزوده</p>
	DH-IPC-HDW5541HP-ASE-PV	<p>5MP Fixed-focal Eyeball WizMind Network Camera</p> <ul style="list-style-type: none"> > 5MP 1/2.7" CMOS image sensor, low illumination, high definition image > Outputs max. 5MP (2592 x 1944)@20 fps and 2688 x 1520 (2688 x 1520)@25/30 fps > H.265 codec, high compression rate, ultra-low bit rate > Built-in efficient warm light and IR LED, and the Max. IR distance is 50 m > ROI, SMART H.264+/H.265+, AI H.264/H.265, flexible coding > Rotation mode, WDR, 3D NR, HLC, BLC, digital watermarking > Sound and light alarm linkage. When the alarm is triggered, the sound and light will be linked > Supports one-tap disarming > Alarm: 1 in, 1 out; audio: 1 in, 1 out; supports max. 256 G Micro SD card, built-in Mic and speaker, support two-way talk. > 12V DC/PoE power supply, easy for installation> ePoE, IP67 protection > SMD 3.0 	<p>۱۴,۲۶۰,۰۰۰</p> <p>+ ۱۰٪ ارزش افزوده</p>
	DH-IPC-HDW2831TP-ZS	<p>8MP Lite IR Vari-focal Eyeball Network Camera</p> <ul style="list-style-type: none"> > 8MP, 1/2.7" CMOS image sensor, low illumination, high image definition > Outputs max.8MP (3840 x 2160) @15 fps, and supports 2688x1520(2688x1520) @25/30 fps > H.265 codec, high compression rate, ultra-low bit rate > Built-in IR LED, max IR distance: 40 m > ROI, SMART H.264+/H.265+, flexible coding > Rotation mode, WDR, 3D NR, HLC, BLC, digital watermarking > Intelligent detection: Intrusion, tripwire > Abnormality detection: Motion detection, video tampering, no SD card, SD card full, SD card error, network disconnection, IP conflict, illegal access, voltage detection > Supports max. 256 GB Micro SD card > 12V DC/PoE power supply > IP67 protection 	<p>۱۵,۵۸۰,۰۰۰</p> <p>+ ۱۰٪ ارزش افزوده</p>
	DH-IPC-HDW3849HP-AS-PV	<p>8MP Smart Dual Light Active Deterrence Fixed-focal Eyeball WizSense Network Camera</p> <ul style="list-style-type: none"> > 8-MP 1/2.8" CMOS image sensor, low luminance, and high definition image. > Outputs max. 840 x 2160@25/30 fps. > ROI, SMART H.264+/H.265+, AI H.264/H.265 > H.265 codec, high compression rate, ultra-low bit rate. > Built-in warm light and IR LED; the max. IR illumination distance is 30m and warm light is 30 m. > Rotation mode, WDR, 3D NR, HLC, BLC, digital watermarking > Intelligent monitoring: Intrusion, tripwire > Abnormality detection: Motion detection, privacy masking, scene changing, audio detection, SD card error, network disconnection, IP conflict, illegal access, and voltage detection. > Alarm: 1 in, 1 out; audio: 1 in, 1 out; supports max. 256 G Micro SD card; built-in dual Mic; built-in speaker; 1-ch speaker; support two-way talk > 12 VDC/PoE power supply. > IP67 protection. > Sound and light alarm > One-tap arming/disarming through alarm input. 	<p>۲۰,۱۶۰,۰۰۰</p> <p>+ ۱۰٪ ارزش افزوده</p>

WIRELESS NETWORK CAMERA

تصویر	مدل	مشخصات	قیمت
 	DH-SD3A200-GNP-W-PV	<p>2MP Starlight IR Active Deterrence Wizsense Network PT Camera</p> <ul style="list-style-type: none"> > 1/2.8" 2Megapixel STARVIS™ CMOS > Starlight technology > IR distance up to 30 m > Deep-learning-based perimeter protection > SMD Plus > IP66 > Active Deterrence 	<p>۷,۹۲۰,۰۰۰</p> <p>+</p> <p>۱۰٪ ارزش افزوده</p>
	DH-IPC-H2AP	<p>2MP Indoor Fixed-focal Wi-Fi Pan & Tilt Network Camera</p> <p>The Hero Series, which is under the Dahua Wireless series, are cameras that are not only easy to install and operate, but also perform outstandingly and are cost-effective. These highly sensitive cameras deliver crystal clear images and offer 360-degree monitoring without blind spots. Their powerful functions, such as human detection and auto tracking, not only assist with the accurate detection and continuous tracking of targets, but also reduce the occurrence of false alarms. It also features two-way talk, which allows you to freely communicate with your scene anytime, anywhere. Information is synchronously sent to your phone to keep you up-to-date. These cameras are widely used in small scenes such as shops and restaurants.</p>	<p>۴,۲۹۰,۰۰۰</p> <p>+</p> <p>۱۰٪ ارزش افزوده</p>
	DH-IPC-H4C	<p>4MP Indoor Fixed-focal Wi-Fi Pan & Tilt Network Camera</p> <p>The Hero Series, which is under the Dahua Wireless series, are cameras that are not only easy to install and operate, but also perform outstandingly and are cost-effective. These highly sensitive cameras deliver crystal clear images and offer 360-degree monitoring without blind spots. Their powerful functions, such as human detection and auto tracking, not only assist with the accurate detection and continuous tracking of targets, but also reduce the occurrence of false alarms. It also features two-way talk, which allows you to freely communicate with your scene anytime, anywhere. Information is synchronously sent to your phone to keep you up-to-date. These cameras are widely used in small scenes such as shops and restaurants.</p>	<p>۵,۴۷۰,۰۰۰</p> <p>+</p> <p>۱۰٪ ارزش افزوده</p>

SPEED DOME NETWORK CAMERA

تصویر	مدل	مشخصات	قیمت
	DH-PSDW81642M-A360-D440	<p>16 MP Multi-Sensor 360° Panoramic PTZ Hubble WizMind Network Camera</p> <ul style="list-style-type: none"> > Channel 2 (PTZ): 1 × 4 MP 1/1.8" CMOS image sensors. > Channel 2 (PTZ): 40x optical zoom, 16x digital zoom. > Channel 2 (PTZ): Illumination distance up to 400 m. > Channel 1 (Panoramic): Three switchable intelligent resources: Perimeter protection, Crowd map, Vehicle density. > Channel 2 (PTZ): Three switchable intelligent resources: Perimeter protection, Video metadata, Face recognition. > AR panorama technology; various AR tags can be overlaid. > Smart tracking, GPS/BDS positioning. > Smart H265+/H264+ encoding. > WDR, 3D NR, HLC, BLC, applicable to various monitoring scenes. > Alarm: 7 in, 3 out; audio: 2in, 2out; 1channel BNC, 1channel RS-485 > supports max. 512 G SD card. 	تماس بگیرید
	DH-PSDW81642ML-A360-D237	<p>8x2MP Multi-Sensor Panoramic + PTZ WizMind Network Camera</p> <ul style="list-style-type: none"> > Panoramic: Eight 1/1.8" 2 Megapixel progressive scan CMOS > PTZ: One 1/1.8" 2 Megapixel progressive scan CMOS > Support 360-degree panoramic view > Starlight+ technology > support Smart H265+/H264+ encoding > Day/Night (ICR); 3D NR; AWB; AGC; BLC > IR distance up to 220 m > Smart tracking > Tripwire > Intrusion 	تماس بگیرید
	DH-SD5A445GB-HNR	<p>4MP 45x Starlight IR Network PTZ Camera</p> <ul style="list-style-type: none"> > 1/2.8" 4Megapixel STARVIS™ CMOS. > 45x optical zoom. > Starlight technology. > Max. 25/30fps@4M. > IR distance up to 150 m. > Auto-tracking 3.0. > Perimeter protection. > Face detection. > SMD 4.0. > Quick Pick. > IP67, IK10. 	۹۷,۹۲۰,۰۰۰ + ۱۰٪ ارزش افزوده
	DH-SD5A432GB-HNR	<p>4MP 32x Starlight IR WizSense Network PTZ Camera</p> <ul style="list-style-type: none"> > 1/2.8" 4Megapixel STARVIS™ CMOS. > Powerful 32x optical zoom. > Max. 25/30 fps@4M. > IR distance up to 150 m. > Auto Tracking 3.0. > Face Detection. > SMD 4.0. > Quick Pick. > PoE+. > IP67, IK10 	۷۴,۸۸۰,۰۰۰ + ۱۰٪ ارزش افزوده
	DH-SD5A432XA-HNR	<p>4MP 32x Starlight IR WizSense Network PTZ Camera</p> <ul style="list-style-type: none"> > 1/2.8" 4Megapixel STARVIS™ CMOS > Powerful 32x optical zoom > Max. 25/30fps@4M > IR distance up to 150 m > Deep-learning-based auto tracking and perimeter protection > SMD PLUS > PoE+ > IP67, IK10 > Face Detection 	۷۴,۸۸۰,۰۰۰ + ۱۰٪ ارزش افزوده
	DH-SD8A240VI-HNI	<p>2MP 40x Starlight IR PTZ Network Camera</p> <ul style="list-style-type: none"> > 1/1.9" 2Megapixel CMOS > Powerful 40x optical zoom > Starlight technology > Max. 50/60fps@1080P > Support Hi-PoE > Smart wiper > IR distance up to 450m > IP67 	۱۰۵,۶۰۰,۰۰۰ + ۱۰٪ ارزش افزوده
	DH-SD59232XA-HNR	<p>2MP 32x Starlight IR WizSense Network PTZ Camera</p> <ul style="list-style-type: none"> > 1/2.8" STARVIS™ CMOS > Powerful 32x optical zoom > Starlight technology > Max. 50/60fps@1080P > Deep-learning-based auto tracking and perimeter protection > Support PoE+ > IR distance up to 150 m > SMD PLUS > IP66 	۵۷,۶۰۰,۰۰۰ + ۱۰٪ ارزش افزوده
	DH-SD49425GB-HNR	<p>4MP 25x Starlight IR Network PTZ Camera</p> <ul style="list-style-type: none"> > 1/2.8" STARVIS™ CMOS. > 25x optical zoom. > Starlight technology. > Max. 25/30fps@4M. > IR distance up to 100 m. > Perimeter protection. > Face detection. > SMD 4.0. > IP66. 	۴۷,۵۲۰,۰۰۰ + ۱۰٪ ارزش افزوده

THERMAL NETWORK CAMERA

تصویر	مدل	مشخصات	قیمت
-------	-----	--------	------



Wiz Sense

DH-TPC-BF1241

دوربین دو لنز حرارتی

- WizSense Thermal Network Bullet Camera
- > Vanadium oxide uncooled focal plane detector.
 - > 4Megapixel progressive scan CMOS.
 - > AI functions: heat detection, tripwire, human/vehicle classification, smoking detection, and call detection.
 - > Uncooled VOx thermal sensor technology
 - > Athermalized lens (thermal camera), focus-free
 - > 1/2.7" 4Megapixel progressive scan CMOS
 - > Support ROI, motion detection, color palettes
 - > Smoking and call behaviour detection
 - > Support fire detection & alarm
 - > Built-in 1/1 alarm in/out
 - > Micro SD memory, IP67, PoE
 - > Smart linkage with strobe light & audio
 - > Dual image fusion (visible and thermal images)

تماس بگیرید



Wiz Sense

DH-TPC-BF1241-T

دوربین دو لنز حرارتی

- WizSense Thermal Network Bullet Camera
- > Uncooled VOx thermal sensor technology
 - > Athermalized lens (thermal camera), focus-free
 - > 1/2.7" 4Megapixel progressive scan CMOS
 - > Support ROI, motion detection, color palettes
 - > Smoking and call behaviour detection
 - > Support fire detection & alarm
 - > Built-in 1/1 alarm in/out
 - > Micro SD memory, IP67, PoE
 - > Smart linkage with strobe light & audio
 - > Temperature measurement
 - > Dual image fusion (visible and thermal images)

تماس بگیرید

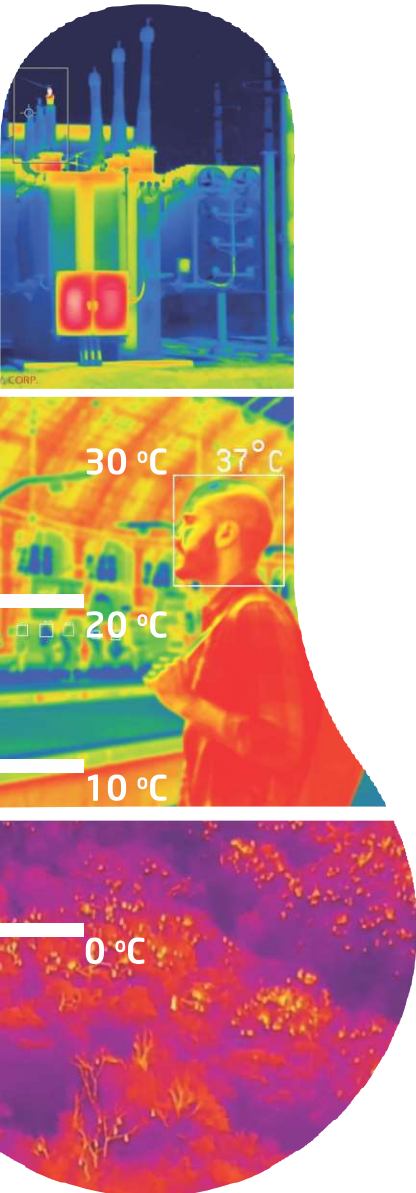


DH-TPC-BF5400

دوربین حرارتی

- 400x300 VOx uncooled thermal sensor technology
- > Athermalized Lens (thermal), Focus-free
 - > Support temperature measurement
 - > Support Fire detection & alarm
 - > Various lens optional (7.5/13/19/25/35mm)
 - > 2/1 alarm in/out
 - > Micro SD memory, IP67, PoE

تماس بگیرید



NETWORK RECORDER

تصویر	مدل	مشخصات	قیمت
	DHI-NVR2104HS-4KS3	<p>4CH Compact 1U 1HDD Lite Network Video Recorder</p> <ul style="list-style-type: none"> > Supports Smart H.265+, H.265, Smart H.264+, H.264 and MJPEG decoding formats. > Max. decoding capability: 6 x 1080p@30 fps. > Max. 80/80/60 Mbps incoming/recording/outgoing bandwidth. > Supports IP cameras with a resolution up to 12 MP. > AI by Recorder supports 4-channel SMD. > AI by Camera supports perimeter protection and SMD. > Supports one-click arming and disarming. 	<p>۶,۰۰۰,۰۰۰</p> <p>+</p> <p>۱۰٪ ارزش افزوده</p>
	DHI-NVR2108HS-S3	<p>8 Channel Compact 1U 1HDD Network Video Recorder</p> <ul style="list-style-type: none"> > Smart H.265+/H.265/Smart H.264+/H.264 decoding format > Max. decoding capability: 6 x 1080p@30 fps. Supports adaptive decoding > AI by camera: perimeter protection, and SMD Plus > Connected to the third-party network cameras > Security baseline 2.1 	<p>۸,۳۳۰,۰۰۰</p> <p>+</p> <p>۱۰٪ ارزش افزوده</p>
	DHI-NVR2108HS-4KS3	<p>8CH Compact 1U 1HDD Lite Network Video Recorder</p> <ul style="list-style-type: none"> > Supports Smart H.265+, H.265, Smart H.264+, H.264 and MJPEG decoding formats. > Max. decoding capability: 6 x 1080p@30 fps. > Max. 80/80/60 Mbps incoming/recording/outgoing bandwidth. > Supports IP cameras with a resolution up to 12 MP. > AI by Recorder supports 4-channel SMD Plus. > AI by Camera supports perimeter protection and SMD Plus. > Supports one-click arming and disarming. 	<p>۹,۳۶۰,۰۰۰</p> <p>+</p> <p>۱۰٪ ارزش افزوده</p>
	DHI-NVR4108HS-4KS3	<p>8CH Compact 1U 1HDD Lite Network Video Recorder</p> <ul style="list-style-type: none"> > Supports Smart H.265+, H.265, Smart H.264+, H.264 and MJPEG decoding formats. > Max. decoding capability: 8 x 1080p@30 fps. > Max. 80/80/60 Mbps incoming/recording/outgoing bandwidth. > Supports IP cameras with a resolution up to 12 MP. > AI by Recorder supports 4-channel SMD Plus. > AI by Camera supports face detection and recognition, perimeter protection, SMD Plus, people counting, stereo analysis and heat map. > Supports EPTZ, and one-click arming and disarming. 	<p>۱۰,۷۴۰,۰۰۰</p> <p>+</p> <p>۱۰٪ ارزش افزوده</p>
	DHI-NVR4116HS-4KS3	<p>16CH Compact 1U 1HDD Lite Network Video Recorder</p> <ul style="list-style-type: none"> > Supports Smart H.265+, H.265, Smart H.264+, H.264 and MJPEG decoding formats. > Max. decoding capability: 8 x 1080p@30 fps or 2 x 8 MP@30 fps. > Max. 160/160/80 Mbps incoming/recording/outgoing bandwidth. > Supports IP cameras with a resolution up to 12 MP. > AI by Recorder supports 4-channel SMD Plus. > AI by Camera supports face detection and recognition, perimeter protection, SMD Plus, people counting, stereo analysis and heat map. > Supports EPTZ, and one-click arming and disarming. 	<p>۱۴,۶۸۰,۰۰۰</p> <p>+</p> <p>۱۰٪ ارزش افزوده</p>
	DHI-NVR4116HS-8P-4KS2	<p>16 Channel Compact 1U 8PoE 4K & H.265 Lite Network Video Recorder</p> <ul style="list-style-type: none"> > 16-channel IP video access > Smart H.265+/Smart H.264+/H.265/H.264; H.265 auto switch > Max 80 Mbps incoming bandwidth > Up to 8MP resolution for preview and playback > 8 channel decoding@1080p (30 fps) > AI by Camera: Perimeter protection; SMD Plus; people counting; heat map > Support IPC UPnP, 8PoE ports 	<p>۱۵,۷۷۰,۰۰۰</p> <p>+</p> <p>۱۰٪ ارزش افزوده</p>
	DHI-NVR4216-4KS3	<p>16CH 1U 2HDDs Lite Network Video Recorder</p> <ul style="list-style-type: none"> > Supports Smart H.265+, H.265, Smart H.264+, H.264 and MJPEG decoding formats. > Max. decoding capability: 8 x 1080p@30 fps or 2 x 8 MP@30 fps. > Max. 160/160/80 Mbps incoming/recording/outgoing bandwidth. > Supports IP cameras with a resolution up to 12 MP. > AI by Recorder supports 4-channel SMD Plus. > AI by Camera supports face detection and recognition, perimeter protection, SMD Plus, people counting, stereo analysis and heat map. > Supports EPTZ, and one-click arming and disarming. 	<p>۱۶,۶۶۰,۰۰۰</p> <p>+</p> <p>۱۰٪ ارزش افزوده</p>
	DHI-NVR4232-4KS3	<p>32CH 1U 2HDDs Lite Network Video Recorder</p> <ul style="list-style-type: none"> > Supports Smart H.265+, H.265, Smart H.264+, H.264 and MJPEG decoding formats. > Max. decoding capability: 8 x 1080p@30 fps or 2 x 8 MP@30 fps. > Max. 160/128/60 Mbps incoming/recording/outgoing bandwidth. > Supports IP cameras with a resolution up to 12 MP. > AI by Recorder supports 2-channel SMD Plus. > AI by Camera supports face detection and recognition, perimeter protection, SMD Plus, people counting, stereo analysis and heat map. > Supports EPTZ, and one-click arming and disarming. 	<p>۲۰,۹۰۰,۰۰۰</p> <p>+</p> <p>۱۰٪ ارزش افزوده</p>

NETWORK RECORDER

تصویر	مدل	مشخصات	قیمت
	DHI-NVR4432-4KS3	32CH 1.5U 4HDDs Lite Network Video Recorder > Supports Smart H.265+, H.265, Smart H.264+, H.264 and MJPEG decoding formats. > Max. decoding capability: 8 × 1080p@30 fps or 2 × 8 MP@30 fps. > Max. 160/128/60 Mbps incoming/recording/outgoing bandwidth. > Supports IP cameras with a resolution up to 12 MP. > AI by Recorder supports 2-channel SMD Plus. > AI by Camera supports face detection and recognition, perimeter protection, SMD Plus, ANPR, people counting, stereo analysis and heat map. > Supports EPTZ, and one-click arming and disarming	۳۳,۱۲۰,۰۰۰ + ۱۰٪ ارزش افزوده
 Wiz Sense	DHI-NVR4108HS-EI	8CH Compact 1U 1HDD WizSense Network Video Recorder > Smart H.265+/H.265/Smart H.264+/H.264/MJPEG decoding format. > Access, storage or forwarding at 80 Mbps. > Max. decoding capability: 16 × 1080p@30 fps. Supports adaptive decoding. > AI by NVR: 1-channel face detection and recognition; 2-channel perimeter protection; up to 10 face databases and 20,000 face images; 4-channel SMD Plus. > AI by Camera: Face detection and recognition, perimeter protection; SMD Plus; people counting; stereo analysis; heat map. > Connected to the third-party network cameras. > Security baseline 2.3	۱۳,۱۰۰,۰۰۰ + ۱۰٪ ارزش افزوده
 Wiz Sense	DHI-NVR4116HS-EI	16CH Compact 1U 1HDD WizSense Network Video Recorder > Smart H.265+/H.265/Smart H.264+/H.264/MJPEG decoding format. > Access, storage or forwarding at 256 Mbps (180 Mbps when AI function enabled). > Max. decoding capability: 16 × 1080p@30 fps. Supports adaptive decoding. > AI by NVR: 1-channel face detection and recognition; 2-channel perimeter protection; up to 10 face databases and 20,000 face images; 4-channel SMD Plus. > AI by Camera: Face detection and recognition, perimeter protection; SMD Plus; people counting; stereo analysis; heat map. > Connected to the third-party network cameras. > Security baseline 2.3.	۱۵,۸۴۰,۰۰۰ + ۱۰٪ ارزش افزوده
 Wiz Sense	DHI-NVR4216-EI	16CH 1U 2HDDs WizSense Network Video Recorder > Smart H.265+/H.265/Smart H.264+/H.264/MJPEG decoding format. > Access, storage or forwarding at 256 Mbps (180 Mbps when AI function enabled). > Max. decoding capability: 16 × 1080p@30 fps. Supports adaptive decoding. > AI by NVR: 1-channel face detection and recognition; 2-channel perimeter protection; up to 10 face databases and 20,000 face images; 4-channel SMD Plus. > AI by Camera: Face detection and recognition, perimeter protection; SMD Plus; people counting; stereo analysis; heat map. > Connected to the third-party network cameras. > Security baseline 2.3.	۲۰,۱۶۰,۰۰۰ + ۱۰٪ ارزش افزوده
 Wiz Sense	DHI-NVR4232-EI	32CH 1U 2HDDs WizSense Network Video Recorder > Smart H.265+/H.265/Smart H.264+/H.264/MJPEG decoding format. > Access, storage or forwarding at 256 Mbps (180 Mbps when AI function enabled). > Max. decoding capability: 16 × 1080p@30 fps. Supports adaptive decoding. > AI by NVR: 1-channel face detection and recognition; 2-channel perimeter protection; up to 10 face databases and 20,000 face images; 4-channel SMD Plus. > AI by Camera: Face detection and recognition, perimeter protection; SMD Plus; people counting; stereo analysis; heat map. > Connected to the third-party network cameras. > Security baseline 2.3.	۲۵,۲۰۰,۰۰۰ + ۱۰٪ ارزش افزوده
 Wiz Sense	DHI-NVR4432-EI	32CH 1.5U 4HDDs WizSense Network Video Recorder > Smart H.265+/H.265/Smart H.264+/H.264/MJPEG decoding format > Access, storage or forwarding at 256 Mbps (180 Mbps when AI function enabled) > Max. decoding capability: 16 × 1080p@30 fps. Supports adaptive decoding > AI by NVR: 1-channel face detection and recognition; 2-channel perimeter protection; up to 10 face databases and 20,000 face images; 4-channel SMD Plus > AI by Camera: Face detection and recognition, perimeter protection; SMD Plus; ANPR; people counting; stereo analysis; heat map > Connected to the third-party network cameras > Security baseline 2.3	۴۳,۰۰۰,۰۰۰ + ۱۰٪ ارزش افزوده
 Wiz Mind	DHI-NVR5216-8P-I	16Channel 1U 2HDDs 8PoE WizMind Network Video Recorder > 16 Channel IP video access > Smart H.265+/H.265/Smart H.264+/H.264/MJPEG > Up to 16 Channel perimeter protection > Up to 4 Channel video stream face recognition > Up to 22 face pictures/sec processing > Up to 20 face databases with 100,000 face images in total > 1-8 PoE Ports support ePoE & EoC	۳۲,۴۰۰,۰۰۰ + ۱۰٪ ارزش افزوده
 ACUPICK Wiz Sense	DHI-NVR5216-EI	16 Channel 2HDD 1U NETWORK VIDEO RECORDER> Supports Smart H.265+, H.265, Smart H.264+, H.264 and MJPEG decoding formats. > Max. decoding capability: 32 × 1080p@30 fps or 16 × 4MP@30 fps. > Max. 384/384/384 Mbps incoming/recording/outgoing bandwidth. > Supports IP cameras with a resolution up to 32 MP. > Supports AcuPick with up to 16 channels. > Supports N+M cluster, iSCSI. > AI by Recorder supports 2-channel face detection and recognition, up to 20 face databases and 20,000 face images; 4-channel perimeter protection; 8-channel SMD Plus. > AI by Camera supports face detection and recognition, perimeter protection, SMD Plus, metadata, ANPR, stereo analysis, heat map, and people counting > Supports EPTZ, and one-click arming and disarming.	۲۹,۹۰۰,۰۰۰ + ۱۰٪ ارزش افزوده

NETWORK RECORDER

تصویر	مدل	مشخصات	قیمت
<p>ACUPICK Wiz Sense</p>	DHI-NVR5232-EI	<p>32 Channel 2HDD 1U NETWORK VIDEO RECORDER</p> <ul style="list-style-type: none"> > Supports Smart H.265+, H.265, Smart H.264+, H.264 and MJPEG decoding formats. > Max. decoding capability: 32 × 1080p@30 fps or 32 × 2MP@30 fps. > Max. 384/384/384 Mbps incoming/recording/outgoing bandwidth. > Supports IP cameras with a resolution up to 32 MP. > Supports AcuPick with up to 32 channels. > Supports N+M cluster, iSCSI. > AI by Recorder supports 2-channel face detection and recognition, up to 20 face databases and 20,000 face images; 4-channel perimeter protection; 8-channel SMD Plus. > AI by Camera supports face detection and recognition, perimeter protection, SMD Plus, metadata, ANPR, stereo analysis, heat map, and people counting. > Supports EPTZ, and one-click arming and disarming. 	<p>۳۹,۹۰۰,۰۰۰</p> <p>+</p> <p>۱۰٪ ارزش افزوده</p>
<p>ACUPICK Wiz Sense</p>	DHI-NVR5432-EI	<p>32 Channels 1.5U 4HDDs WizSense Network Video Recorder</p> <ul style="list-style-type: none"> > Smart H.265+/H.265/Smart H.264+/H.264/MJPEG decoding format. > Max. decoding capability: 32 × 1080p@30 fps or 32 × 2MP@30 fps. > Max. 384 Mbps incoming/recording/outgoing bandwidth. > Support AcuPick with Max. 16-Channel. > Support N+M cluster. > AI by recorder: 2-channel face detection and recognition, 4-channel perimeter protection, and 8-channel SMD Plus. > AI by camera: Face detection and recognition, perimeter protection, SMD Plus, metadata, ANPR, stereo analysis, heat map, and people counting. > Security baseline 2.3. 	<p>۵۶,۱۶۰,۰۰۰</p> <p>+</p> <p>۱۰٪ ارزش افزوده</p>
<p>ACUPICK Wiz Sense</p>	DHI-NVR5464-EI	<p>64 Channels 1.5U 4HDDs WizSense Network Video Recorder</p> <ul style="list-style-type: none"> > Supports Smart H.265+, H.265, Smart H.264+, H.264 and MJPEG decoding formats. > Max. decoding capability: 32 × 1080p@30 fps or 32 × 2MP@30 fps. > Max. 384/384/384 Mbps incoming/recording/outgoing bandwidth. > Supports IP cameras with a resolution up to 32 MP. > Supports AcuPick with up to 32 channels. > Supports N+M cluster, iSCSI. > AI by Recorder supports 2-channel face detection and recognition, up to 20 face databases and 20,000 face images; 4-channel perimeter protection; 8-channel SMD Plus. > AI by Camera supports face detection and recognition, perimeter protection, SMD Plus, metadata, ANPR, stereo analysis, heat map, and people counting. > Supports EPTZ, and one-click arming and disarming. 	<p>۷۴,۲۵۰,۰۰۰</p> <p>+</p> <p>۱۰٪ ارزش افزوده</p>
<p>ACUPICK Wiz Sense</p>	DHI-NVR5832-EI	<p>32 Channels 2U 8HDD WizSense Network Video Recorder</p> <ul style="list-style-type: none"> > Supports Smart H.265+, H.265, Smart H.264+, H.264 and MJPEG decoding formats. > Max. decoding capability: 32 × 1080p@30 fps or 32 × 2MP@30 fps. > Max. 384/384/384 Mbps incoming/recording/outgoing bandwidth. > Supports IP cameras with a resolution up to 32 MP. > Supports AcuPick with up to 32 channels. > Supports N+M cluster, iSCSI. > Support Raid0/1/5/6/10. > AI by Recorder supports 2-channel face detection and recognition, up to 20 face databases and 20,000 face images; 4-channel perimeter protection; 8-channel SMD Plus. > AI by Camera supports face detection and recognition, perimeter protection, SMD Plus, metadata, ANPR, stereo analysis, heat map, and people counting. > Supports EPTZ, and one-click arming and disarming. 	<p>۷۴,۴۵۰,۰۰۰</p> <p>+</p> <p>۱۰٪ ارزش افزوده</p>
<p>Wiz Mind</p>	DHI-NVR608H-32-XI	<p>32CH 2U 8HDDs WizMind Network Video Recorder</p> <ul style="list-style-type: none"> > Supports Smart H.265+, H.265, Smart H.264+, H.264 and MJPEG decoding formats. > Max. decoding capability: 32 × 1080p@30 fps. > Max. 1280/1280/1024 Mbps incoming/recording/outgoing bandwidth. > Supports AcuPick with up to 32 channels. > AI by Recorder supports 8-channel face detection and recognition, up to 40 face databases and 300,000 face images; 8-channel metadata; 32-channel perimeter protection; 32-channel SMD Plus. > AI by Camera supports face detection and recognition, perimeter protection, SMD Plus, metadata, ANPR, stereo analysis, heat map, and people counting. > Supports N+M cluster, Raid 0/1/5/6/10, iSCSI, Drawer-like chassis design allows for HDD hot swapping. > Supports EPTZ, One-click Arming & Disarming > Security baseline 2.3. 	<p>۱۱۳,۵۲۰,۰۰۰</p> <p>+</p> <p>۱۰٪ ارزش افزوده</p>
<p>Wiz Mind</p>	DHI-NVR608H-64-XI	<p>64CH 2U 8HDDs WizMind Network Video Recorder</p> <ul style="list-style-type: none"> > Supports Smart H.265+, H.265, Smart H.264+, H.264 and MJPEG decoding formats. > Max. decoding capability: 32 × 1080p@30 fps. > Max. 1280/1280/1024 Mbps incoming/recording/outgoing bandwidth. > Supports AcuPick with up to 64 channels. > AI by Recorder supports 8-channel face detection and recognition, up to 40 face databases and 300,000 face images; 8-channel metadata; 32-channel perimeter protection; 32-channel SMD Plus. > AI by Camera supports face detection and recognition, perimeter protection, SMD Plus, metadata, ANPR, stereo analysis, heat map, and people counting. > Supports N+M cluster, Raid 0/1/5/6/10, iSCSI, Drawer-like chassis design allows for HDD hot swapping. > Supports EPTZ, One-click 	<p>۱۷۱,۶۰۰,۰۰۰</p> <p>+</p> <p>۱۰٪ ارزش افزوده</p>
<p>Wiz Mind</p>	DHI-NVR608H-128-XI	<p>128CH 2U 8HDDs WizMind Network Video Recorder</p> <ul style="list-style-type: none"> > Supports Smart H.265+, H.265, Smart H.264+, H.264 and MJPEG decoding formats. > Max. decoding capability: 32 × 1080p@30 fps. > Max. 1280/1280/1024 Mbps incoming/recording/outgoing bandwidth. > Supports AcuPick with up to 64 channels. > AI by Recorder supports 8-channel face detection and recognition, up to 40 face databases and 300,000 face images; 8-channel metadata; 32-channel perimeter protection; 32-channel SMD Plus. > AI by Camera supports face detection and recognition, perimeter protection, SMD Plus, metadata, ANPR, stereo analysis, heat map, and people counting. > Supports N+M cluster, Raid 0/1/5/6/10, iSCSI, Drawer-like chassis design allows for HDD hot swapping. > Supports EPTZ, One-click Arming & Disarming.> Security baseline 2.3. 	<p>۲۳۷,۶۰۰,۰۰۰</p> <p>+</p> <p>۱۰٪ ارزش افزوده</p>
	DHI-NVR616-64-4KS2	<p>64 Channel 3U 16HDDs Ultra series Network Video Recorder</p> <ul style="list-style-type: none"> > New 4.0 user interface > 16-channel decoding @1080p (30 fps); self-adaptive decoding capability > Access, storage or forwarding at 384 Mbps > Simultaneous video output for VGA and HDMI1.4K heterogeneous output for the 2HDMI ports > Multiple data mode such as Raid0, Raid1, Raid5, Raid6, and Raid10 > Remote configuration and management of IPCs, such as setting parameters, acquiring information and upgrading IPCs of the same model in batches > AI-by-camera functions such as perimeter protection, face detection and recognition, SMD Plus, video metadata, ANPR and 3D behavior analysis > N+M cluster. When the host fails, the standby device will continue to record; once the host recovers, video recorded on the standby device will be transmitted back 	<p>تماس بگیرید</p>

NETWORK RECORDER

تصویر

مدل

مشخصات

قیمت



DHI-NVR616-128-4KS2



۱۲۸ کانال تشخیص چهره هارد

- 128 Channel 3U 16HDDs Ultra series Network Video Recorder
- > New 4.0 user interface
- > 16-channel decoding @1080p (30 fps); self-adaptive decoding capability
- > Access, storage or forwarding at 384 Mbps
- > Simultaneous video output for VGA and HDMI1; 4K heterogeneous output for the 2 HDMI ports
- > Multiple data mode such as Raid0, Raid1, Raid5, Raid6, and Raid10
- > Remote configuration and management of IPCs, such as setting parameters, acquiring information and upgrading IPCs of the same model in batches
- > AI-by-camera functions such as perimeter protection, face detection and recognition, SMD Plus, video metadata, ANPR and 3D behavior

تماس بگیرید

OTHER

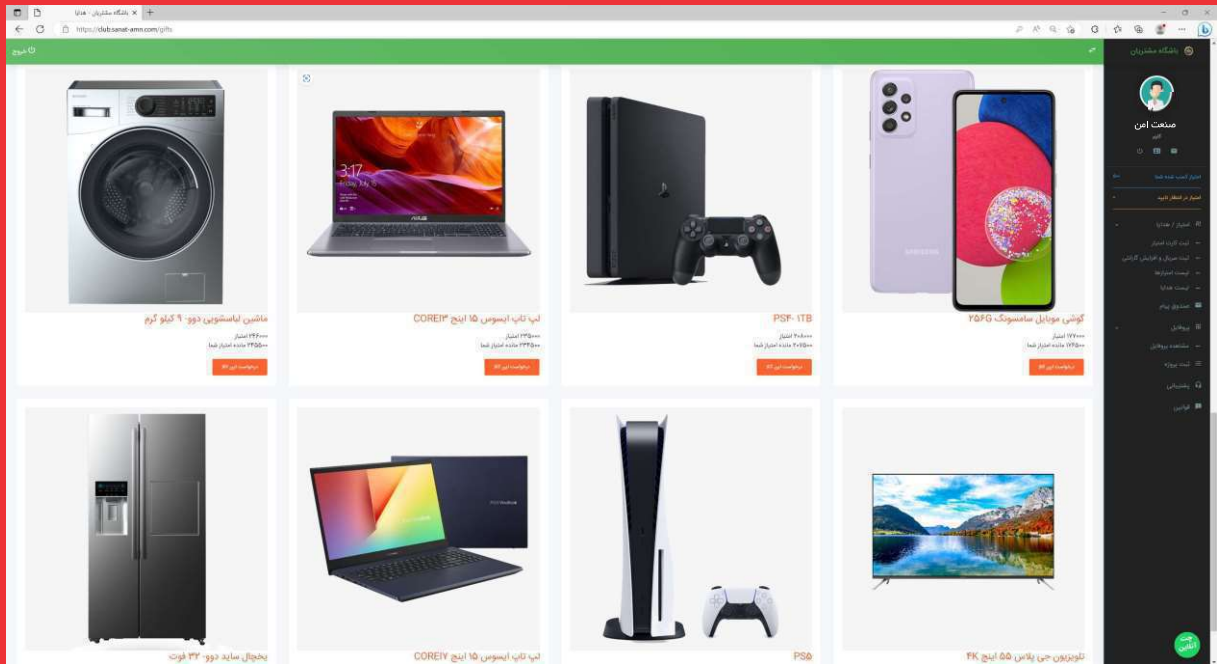
تصویر	مدل	مشخصات	قیمت
	DHI-IPMECS-2201C-IR	<p>Access ANPR Kit</p> <ul style="list-style-type: none"> > Adopts high-performance CMOS image sensor and processor for in-depth extraction and analysis of vehicle information 24/7 > Embraces deep learning algorithm for accurate recognition of vehicles without license plate, and vehicle model, vehicle logo, vehicle series, vehicle color, and more > Single network port and integration of ANPR camera, LED illuminators, and LED display facilitate installation and deployment > Information shown on the LED display can be customized > Supports two-way audio and voice broadcasting, ideal for unattended parking solution > Steel casing and electrophoresis process bring attractive appearance and allow durable performance 	تماس بگیرید
	DH-NKB3000	<p>HD Network Control Keyboard</p> <ul style="list-style-type: none"> > Keyboard to Control -DAHUA Standalone DVR -DAHUA (Network) High Speed Dome -DAHUA High Speed Dome -Central Management Platform -Network Video Server > RS232, RS485 & Network Connections > Four Dimensional Joystick Control of PTZ Functions > Support full HD 1080p live view; Support HDMI & VGA sync output > Support snapshot and recording to U-disk > Support Video-Wall display > Support bidirectional talk > Preset Position, Auto Scan, Auto Pan, Auto Tour & Pattern Control > Auxiliary Functions, OSD and operation guides Control 	<p>۳۹,۶۰۰,۰۰۰</p> <p>+ ۱۰% ارزش افزوده</p>



WWW.SANAT-AMN.COM

الکترونیك صنعت امن

SANAT AMN ELECTRONIC



با خرید و ثبت کد با تگ ماه متترین
صنعت امن از هدایای ویژه بهره مند شوید

